

Electrochromic and Colorimetric Properties of Nickel(II) Oxide Thin Films Prepared by Aerosol-Assisted Chemical Vapor Deposition

Muhammad Z. Sialvi,^{†,‡} Roger J. Mortimer,^{*,†} Geoffrey D. Wilcox,[‡] Asri Mat Teridi,[†] Thomas S. Varley,[§] K. G. Upul Wijayantha,[†] and Caroline A. Kirk[†]

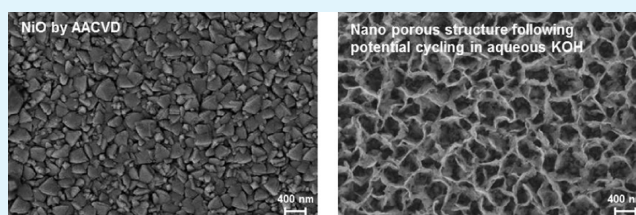
[†]Department of Chemistry and [‡]Department of Materials, Loughborough University, Loughborough, Leicestershire LE11 3TU, United Kingdom

[§]Department of Chemistry, University College London, 20 Gordon Street, London WC1H 0AJ, United Kingdom

S Supporting Information

ABSTRACT: Aerosol-assisted chemical vapor deposition (AACVD) was used for the first time in the preparation of thin-film electrochromic nickel(II) oxide (NiO). The as-deposited films were cubic NiO, with an octahedral-like grain structure, and an optical band gap that decreased from 3.61 to 3.48 eV on increase in film thickness (in the range 500–1000 nm). On oxidative voltammetric cycling in aqueous KOH (0.1 mol dm⁻³) electrolyte, the morphology gradually changed to an open porous NiO structure. The electrochromic properties of the films were investigated as a function of film thickness, following 50, 100, and 500 conditioning oxidative voltammetric cycles in aqueous KOH (0.1 mol dm⁻³). Light modulation of the films increased with the number of conditioning cycles. The maximum coloration efficiency (CE) for the NiO (transmissive light green, the “bleached” state) to NiOOH (deep brown, the colored state) electrochromic process was found to be 56.3 cm² C⁻¹ (at 450 nm) for films prepared by AACVD for 15 min followed by 100 “bleached”-to-colored conditioning oxidative voltammetric cycles. Electrochromic response times were <10 s and generally longer for the coloration than the bleaching process. The films showed good stability when tested for up to 10 000 color/bleach cycles. Using the CIE (Commission Internationale de l’Eclairage) system of colorimetry the color stimuli of the electrochromic NiO films and the changes that take place on reversibly oxidatively switching to the NiOOH form were calculated from in situ visible spectra recorded under electrochemical control. Reversible changes in the hue and saturation occur on oxidation of the NiO (transmissive light green) form to the NiOOH (deep brown) form, as shown by the track of the CIE 1931 *xy* chromaticity coordinates. As the NiO film is oxidized, a sharp decrease in luminance was observed. CIELAB *L*a*b** coordinates were also used to quantify the electrochromic color states. A combination of a low *L** and positive *a** and *b** values quantified the perceived deep brown colored state.

KEYWORDS: AACVD, nickel(II) oxide, electrochromic, electrochromism, CIE chromaticity coordinates, colorimetry



INTRODUCTION

Electrochromic materials have the property of a change, evocation, or bleaching of color, as effected by an applied electrical potential, sufficient to induce an electrochemical redox process.^{1,2} Applications of electrochromic materials include “smart” windows for architectural applications,³ and antiglare car mirrors,⁴ based on the modulation of transmitted and reflected visible radiation, respectively. The development of smart windows is the subject of intensive research, as implementation of such technology would lead to a significant reduction in energy consumption in highly glazed buildings by reducing cooling loads, heating loads, and the demand for electric lighting,⁵ as well as improving indoor comfort because of less glare and thermal discomfort.⁶

Anodically coloring thin-film nickel(II) oxide (NiO) is often used as a secondary electrochromic material to complement cathodically coloring tungsten(VI) trioxide (WO₃) in prototype smart windows.^{6,7} Color switching properties of NiO (transmissive light green to deep brown) also make it potentially

useful as a primary electrochromic material, where a “neutral” colored state is desired. Electrochromic NiO thin films have been prepared by sputtering,^{8–10} electron-beam deposition,¹¹ thermal evaporation,¹² electrodeposition,¹³ template-assisted electrodeposition,¹⁴ sol–gel,^{15,16} chemical bath,¹⁷ hydrothermal deposition,¹⁸ chemical precipitation,¹⁹ hot-filament metal-oxide vapor deposition,²⁰ and chemical vapor deposition (CVD)²¹ techniques. We here report the first study of aerosol-assisted chemical vapor deposition (AACVD) of electrochromic NiO thin films and their characterization using powder X-ray diffraction (XRD), scanning electron microscopy (SEM), and optical absorption. As a variant of conventional CVD, AACVD involves the atomization of precursor solution into submicrometer-sized aerosol droplets. The droplets are then transported into a heating zone, where the solvent is rapidly

Received: March 20, 2013

Accepted: May 28, 2013

Published: June 10, 2013

evaporated, and the chemical precursors undergo decomposition and/or chemical reaction near or on a heated substrate to form the desired films.²² When compared to CVD, the AACVD method has several advantages.^{23–27} These include a wide choice and availability of precursor for depositing high-quality coatings, the generation of aerosol to simplify the delivery and vaporization of precursor, and the ability to synthesize multicomponent products with precise stoichiometric control. Furthermore, low cost, high deposition rates, and the ability to operate under varied environments at low pressure, or even in open atmosphere, make AACVD an ideal process for scale up toward smart window applications.

The electrochromic properties of the NiO-based films prepared by AACVD are reported following transfer to aqueous KOH (0.1 mol dm⁻³) electrolyte, with colorimetric properties being quantified using CIE (Commission Internationale de l'Éclairage) principles.²⁸ In colorimetry, the human eye's sensitivity to visible light is measured and a numerical description of the color stimulus is given, thus providing a more precise way to define color than qualitatively interpreting spectral absorption bands.

EXPERIMENTAL SECTION

Formation of NiO Films by AACVD. Fluorine-doped tin oxide (SnO₂:F, FTO) on glass (Pilkington group limited, NSG TEC C15, R_s 14 Ω □⁻¹, light transmittance of 84%) was used as the substrate for preparation of NiO films. To obtain uniform adherent films the FTO/glass substrates (each cut to 50 × 7 mm dimensions) were cleaned by rinsing in deionized water, followed by sonication for 10 min each in deionized water, propan-2-ol, acetone and ethanol. Prior to AACVD, the top 20 mm of each FTO/glass substrate was masked with glass, such that the NiO would deposit on the lower 30 × 7 mm area.

Figure 1 shows a schematic diagram of the two chamber configuration AACVD apparatus. Each FTO/glass substrate was

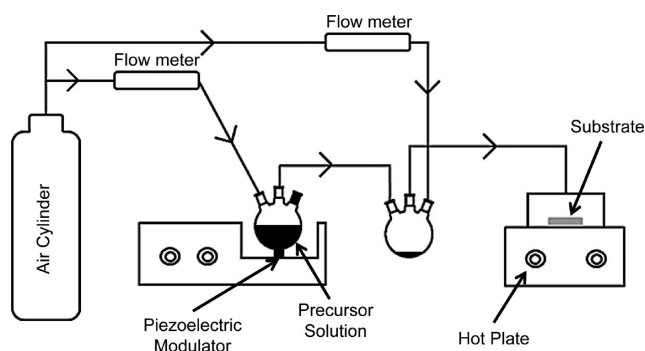


Figure 1. Schematic diagram of the experimental AACVD apparatus.

heated to 450 °C on a temperature controlled hot plate. For preparation of the NiO films, nickel(II) acetylacetonate (0.05 mol dm⁻³) was used as the source material. Precursor solution was prepared by heating and stirring nickel(II) acetylacetonate and 1 cm³ of *N,N*-dimethylaminoethanol (used to improve the solubility of the nickel(II) complex and to enhance volatility) in toluene for 30 min then allowing the solution to cool to room temperature. The precursor solution was then placed above the piezoelectric modulator of an ultrasonic humidifier to atomize the solution into fine aerosol droplets. Using air as a carrier gas, the aerosol droplets were first transferred at a flow rate of 0.21 dm³ min⁻¹ into the first chamber where any large particles were separated and held. A second carrier gas (air) at a flow rate of 2.34 dm³ min⁻¹ was then used to direct the small particles toward the heated substrate, where they underwent evaporation, decomposition and chemical reaction to synthesize the desired films. The flow rate was controlled by a LIX linear flow meter. Films were

deposited for 10, 15, and 20 min and are here abbreviated as NiO(10 min), NiO(15 min), and NiO(20 min), respectively.

XRD and SEM Characterization. Powder XRD data were collected on a Bruker Advance D8 powder X-ray diffractometer in reflection geometry using Cu K α_1 radiation with a Ge monochromator and linear position sensitive detector (PSD) over the two theta range 5–65° 2 θ with a step size of 0.014° 2 θ and a total collection time of 4 h. Films deposited onto FTO/glass substrates were mounted on perspex sample holders. Shifts in the reflection positions were observed as no internal standard could be added to the sample for calibration of the reflection positions.

A Leo 1530 field-emission gun scanning electron microscopy (SEM) system was used to examine the film morphologies. The deposited films were washed with distilled water, dried in air and then mounted on SEM stubs using conducting silver paint. Samples were coated with a thin layer of gold to improve the conductivity of the films. A Polaron Emitech SC7604 sputter coater was used.

Electrochemical, Spectroelectrochemical, and Color Measurement. A Princeton Applied Research 263A potentiostat was used for electrode potential control. NiO/FTO/glass substrates (with adhesive copper tape at the top for uniform electrical contact), platinumized titanium and a saturated calomel (Hg/Hg₂Cl₂) electrode (SCE) were used as working, counter, and reference electrodes, respectively. A single compartment electrochemical cell was used for all measurements.

In situ visible-region spectra were recorded in transmission mode using a Hewlett-Packard 8452A diode array spectrophotometer. A standard 1 cm path length polystyrene cuvette was used as the spectroelectrochemical cell, with a machined polytetrafluoroethylene lid that allowed each NiO/FTO/glass substrate to be placed parallel to the optical faces. In this case, a silver wire acted as a pseudo reference electrode, with a platinumized titanium counter electrode. CIE 1931 xy chromaticity coordinates and luminance data were calculated from the spectral absorbance-wavelength data as described earlier.²⁹ For simulation of midmorning to midafternoon natural light, the relative power distribution of a D55 constant temperature (5500 K blackbody radiation) standard illuminant was used in the calculations. Chromaticity coordinates were also transformed to $L^*a^*b^*$ coordinates, a uniform color space (CIELAB) defined by the CIE in 1976.³⁰

RESULTS AND DISCUSSION

Crystalline Phases Identified, Film Morphology, and Optical Absorption of the As-Deposited NiO Films.

Figure 2 shows the powder XRD patterns for NiO films on FTO/glass at different deposition times. The reflections at 37.3, 43.3, and 62.9° 2 θ can be assigned to cubic NiO (International Centre for Diffraction Data (ICDD) Powder Diffraction File (PDF) 47–1049). The NiO phase is stable and its formation is independent of the film thickness. The intensity of the NiO

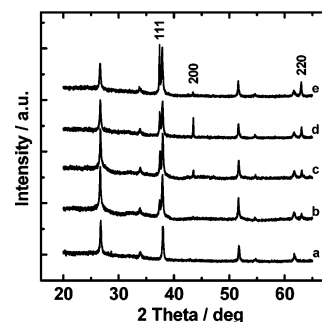


Figure 2. Powder XRD patterns for: (a) FTO/glass, (b) NiO(10 min), (c) NiO(15 min), (d) NiO(20 min), and (e) NiO(20 min) after 3500 oxidative conditioning voltammetric cycles in aqueous KOH (0.1 mol dm⁻³).

reflections suggests preferred orientation of the films, as the (111) reflection is more intense than the (200). In a randomly oriented sample of NiO, the (200) reflection should be the most intense.

Figure 3 includes photographs for the as-deposited NiO films at the three deposition times, with SEM images shown in

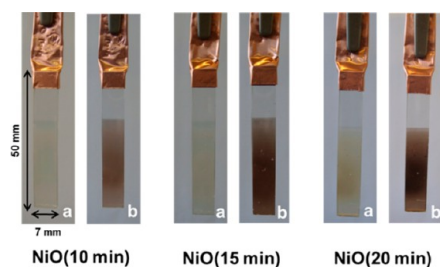


Figure 3. Photographs of (a) as-deposited NiO films and (b) NiOOH films (following 3500 cycles -0.50 to $+0.70$ V vs SCE at 50 mV s^{-1} , and then removal at $+0.70$ V). Each film was deposited on the lower 30 mm length of each 7 mm width FTO/glass).

Figure 4. Uniform NiO film covers the FTO/glass substrate surface and exhibits a nanoscale morphology of octahedral-like grains. EDS analysis (see Figures S1 and S2 in the Supporting Information) shows no evidence of the presence of nitrogen from the decomposition of the dimethylaminoethanol. The cross-sectional images (insets in Figure 4) show that film thickness increases with deposition time.

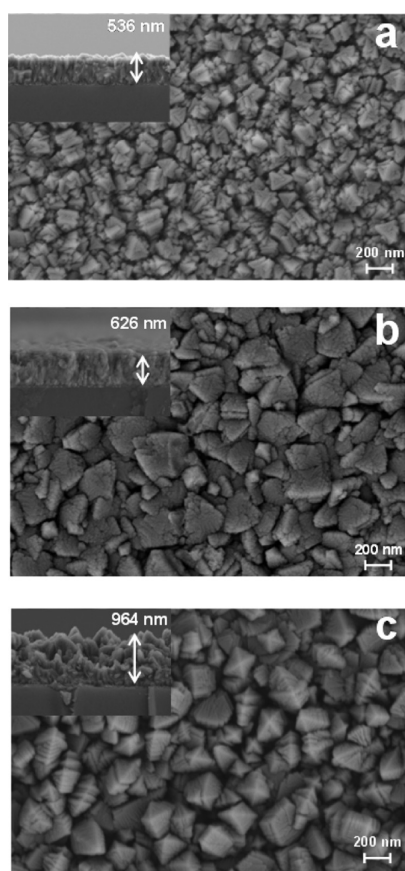


Figure 4. SEM images of NiO films deposited on FTO/glass for three deposition times: (a) NiO(10 min), (b) NiO(15 min), and (c) NiO(20 min). Insets illustrate the cross-sectional images.

Figure S3 in the Supporting Information shows the optical absorption spectra for the as-deposited films recorded in the wavelength range 330 – 820 nm (3.75 – 1.51 eV). The data were analyzed using a classical relation for near edge optical absorption in semiconductor materials.³¹ Analyzing the variation of $(\alpha h\nu)^2$ vs photon energy ($h\nu$) in eV for NiO films suggests a direct interband transition. The band gaps were 3.61 , 3.53 , and 3.48 eV for the NiO(10 min), NiO(15 min), and NiO(20 min) films, respectively. These direct band energy values are in good agreement with literature values for NiO thin films prepared by spray pyrolysis using aqueous nickel chloride solutions, with the slight decrease in band gap with increasing film thickness being attributed to increased grain size.³²

Transformation of NiO Morphology on Voltammetric Cycling in Aqueous KOH (0.1 mol dm^{-3}) Electrolyte. Figure 5 shows an example of cyclic voltammograms (CVs) in

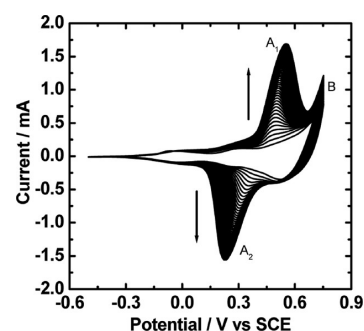
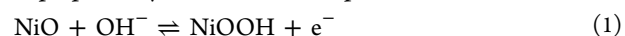


Figure 5. CVs starting from the as-deposited NiO(15 min) film in aqueous KOH (0.1 mol dm^{-3}). The potential range was -0.50 V \rightarrow $+0.70$ V \rightarrow -0.50 V vs SCE for 50 cycles at the scan rate of 50 mV s^{-1} .

aqueous KOH (0.1 mol dm^{-3}) electrolyte commencing with, in this case, an as-deposited NiO(15 min) film. From the plot it can be seen that during the first 50 cycles, a continuous increase in capacity under the oxidation and reduction process takes place. This process is known as the so-called activation period and has been reported for NiO films prepared by sol–gel,³³ and pulsed laser-deposition.^{34–36} Furthermore, because of this activation process, on continuous oxidative voltammetric cycling, the octahedral-like grains of as-deposited NiO (Figure 6a), gradually transform to an open porous structure of interconnected flakes (see Figure 6b, following 3500 voltammetric cycles and Figure S4 (Supporting Information), for a NiO(20 min) film following 500 voltammetric cycles). Such a porous interconnecting structure will enhance the intercalation/deintercalation of hydroxide ions (eq 1, a simplified form of the redox process) during voltammetric cycling, thus leading to enhanced electrochromic performance. Similar porous morphologies have been previously reported for NiO-based films prepared by chemical bath deposition methods.^{17,37}



The electrochemically generated porous NiO is electrochromic and oxidatively switches (eq 1) from a “bleached” (transmissive light green) state to the colored nickel oxyhydroxide (NiOOH) (deep brown; for photographs see Figure 3) state. On continuous cycling, this process of morphology transformation is enhanced as the peak currents gradually increase with cycle number (Figure 5).

The two broad redox peaks in the CVs (Figure 5) are associated with the coloration and bleaching process for NiO,³⁸ one anodic peak (A_1), responsible for the oxidation, and one

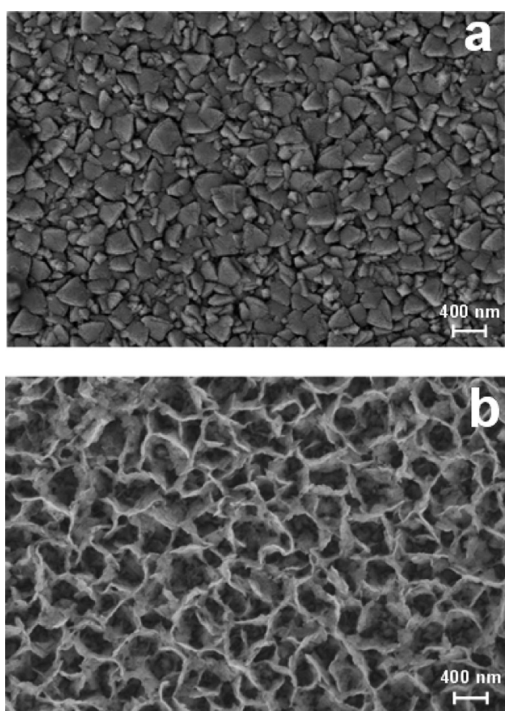


Figure 6. SEM images of NiO(15 min) films deposited on FTO/glass: (a) as-deposited and (b) following 3500 voltammetric cycles in aqueous KOH (0.1 mol dm^{-3}).

cathodic peak (A_2), for the reduction process. For all sets of such CVs, an increase in anodic current after +0.60 V (B) is observed that corresponds to the beginning of the oxygen evolution reaction (OER). These CV features are similar to those obtained for NiO thin films initially prepared by electrodeposition¹³ and chemical bath deposition³⁹ techniques. The anodic and cathodic peak currents increase (Figure 7) with

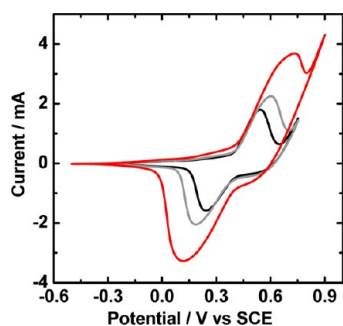


Figure 7. 100th CV (at 50 mV s^{-1}) in aqueous KOH (0.1 mol dm^{-3}) of films prepared from as-deposited NiO(10 min) (black), NiO(15 min) (gray), and NiO(20 min) (red).

an increase in deposition time, with more electroactive material being available. XRD data collected on this sample showed NiO still to be present (Figure 2e), but the relative intensities were now different to the original deposited film, with the (200) reflection especially reduced in intensity. This agrees with the morphology changes shown in the SEM images (Figure 6).

Electrochromic Properties. Table 1 gives in situ spectral data and calculated electrochromic performance parameters for square-wave potential switching between the “bleached” and colored forms after the as-deposited NiO films (prepared by AACVD for 10, 15, and 20 min) had been subject to 50, 100,

and 500 continuous conditioning oxidative voltammetric cycles in aqueous KOH (0.1 mol dm^{-3}) electrolyte. Figure 8 shows example visible region in situ transmittance spectra, in this case for the as-deposited NiO(15 min) film, and in the oxidized NiOOH colored state, following increasing numbers of conditioning cycles. For such a film, it is noted from Table 1, that after 500 cycles the change in optical transmittance between the “bleached” and colored forms increased from 21.4 to 54.8% when measured at 550 nm. This increase in transmittance change between the “bleached” and colored state on continuous cycling is once again due to the gradual change in film morphology from octahedral-like grains to a high surface area of porous interconnecting flakes. Such porous morphology shows greater electrochromic performance because of increased contact between active material and electrolyte for facilitating hydroxide ion penetration.

Figure 9 shows the transmittance spectra of all the as-deposited NiO films in the “bleached” and colored states. Transmittances for both the “bleached” (T_b) and colored (T_c) states decrease as the deposition time increases (Table 1 and Figure 9). On increase of deposition time the extent of color change to the oxidized form increases but the films also appear less transparent in the reduced state (for photographs see Figure 3). The films deposited for 10, 15, and 20 min, followed by 500 voltammetric cycles, each present the largest contrast (Table 1), the transmittance change ($\sim 54\%$ at 550 nm) between the “bleached” and colored states, being more than that of the films that were conditioned by only 50 and 100 cycles.

Spectral data were further used to calculate the electrical power consumption of each electrochromic film, expressed as the coloration efficiency ($CE = (\Delta A)_{\lambda/nm}/Q$), where (ΔA) is the absorbance change between the “bleached” and colored states and Q is the charge density ($C \text{ cm}^{-2}$) for each switching process. Each charge density was calculated by integration of the current–time transients, recorded on switching color states. Examples of current–time transients (see Figure S5 in the Supporting Information) and visible region absorbance spectra (Figure 10) are given for the reversible switching between the “bleached” and colored states of one of the films. On oxidation of the transmissive green “bleached” state, the visible region absorbance increases (Figure 10a) as the deep brown colored state forms. On reduction, the deep brown colored state reverts to the transmissive green “bleached” state, with a decrease in the visible region absorbance (Figure 10b). The absorbance change, ΔA , increases with increasing deposition time and the number of “bleached”/colored cycles (Table 1). The highest values (0.72 at 550 nm (Figure 11 and Table 1) and 0.88 at 450 nm (Figure 11)) were obtained for NiO(20 min) recorded at 500 cycles. The CE values (Table 1 and Figure 12) are comparable to those for films obtained by electrodeposition ($50 \text{ cm}^2 \text{ C}^{-1}$),¹³ template-assisted electrodeposition ($41 \text{ cm}^2 \text{ C}^{-1}$),¹⁴ CVD ($44 \text{ cm}^2 \text{ C}^{-1}$),²¹ spray pyrolysis ($30 \text{ cm}^2 \text{ C}^{-1}$),⁴⁰ and vacuum evaporation ($32 \text{ cm}^2 \text{ C}^{-1}$).⁴¹

Absorbance vs time plots (not included) were used to calculate the response times (Table 1) for all the NiO thin films. Response time is defined as the time required for obtaining partial or total change in absorbance.¹ Here, response times are reported as the time taken for the absorbance to reach 90% of the total absorbance change for both coloration (t_c) and “bleaching” (t_b) process (Table 1). Response times for both coloration and “bleaching” increased with both increasing number of conditioning cycles and film thickness. Generally,

Table 1. In Situ Spectral Data and Electrochromic Performance Parameters on Square Wave Switching (0.00 V → +0.50 V → −0.20 V vs. silver wire) between the “Bleached” and Colored States after the As-Deposited NiO Films had been subject to 50, 100, and 500 Continuous Conditioning Oxidative Voltammetric Cycles in Aqueous KOH (0.1 mol dm^{−3})^a

original film source	cycle no.	%T _b	%T _c	Δ%T	ΔA	CE (cm ² C ^{−1})	t _c /t _b (s)
NiO(10 min)	50	86.8	66.6	20.0	0.11	39.6	3.2/2.7
NiO(10 min)	100	85.6	55.4	30.2	0.19	40.3	3.4/2.9
NiO(10 min)	500	84.6	30.9	53.7	0.44	34.6	5.6/3.8
NiO(15 min)	50	75.3	53.9	21.4	0.15	43.2	3.2/2.8
NiO(15 min)	100	74.8	46.4	28.4	0.21	45.0	4.1/3.6
NiO(15 min)	500	74.4	19.6	54.8	0.58	39.8	5.7/5.6
NiO(20 min)	50	65.9	33.7	32.2	0.30	41.8	5.0/4.2
NiO(20 min)	100	65.5	24.0	41.5	0.44	41.8	5.0/4.2
NiO(20 min)	500	66.3	12.5	53.8	0.72	32.5	7.4/6.5

^aT_b = transmittance of “bleached” form, T_c = transmittance of colored form, Δ%T = change in transmittance between the “bleached” and colored forms, ΔA = change in absorbance, CE = coloration efficiency, t_c and t_b = switching times for coloration and bleaching. All measurements were taken at the wavelength for maximal absorbance change, 550 nm, which is also the wavelength where the human eye is most sensitive.

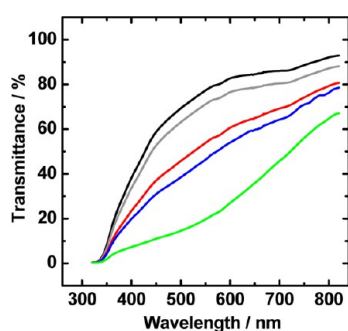


Figure 8. Visible region in situ transmission spectra recorded in the wavelength range 320–820 nm in aqueous KOH (0.1 mol dm^{−3}), showing the formation of the colored state with conditioning oxidative voltammetric cycle number. As-deposited NiO(15 min) film at 0.00 V vs silver wire (black). As-deposited NiO(15 min) film at +0.40 V vs silver wire, following 50 voltammetric cycles −0.50 V → +0.70 V → −0.50 V vs SCE (red). NiO(15 min) film at +0.40 V vs silver wire, following 100 voltammetric cycles −0.50 V → +0.70 V → −0.50 V (blue). NiO(15 min) film at +0.60 V vs silver wire, following 500 voltammetric cycles −0.50 V → +0.70 V → −0.50 V (green). All spectra were corrected for the transmittance of the uncoated FTO/glass substrate in aqueous KOH (0.1 mol dm^{−3}).

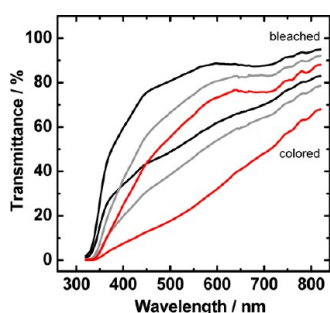


Figure 9. Visible region in situ transmission spectra for the “bleached” and colored states following 100 voltammetric cycles in aqueous KOH (0.1 mol dm^{−3}): NiO(10 min) (black), NiO(15 min) (gray), and NiO(20 min) (red). For each, the upper spectrum is that for the “bleached” form.

response times for the coloration process were longer than those for the “bleaching” process.

Cycle life is one of the key parameters for commercialization as it is an experimental measure of the film durability. Figure 13

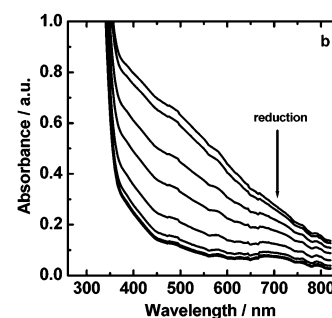
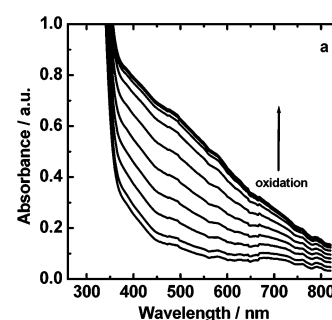


Figure 10. (a, b) Visible-region absorbance spectra (spectra recorded every 0.5 s), for the reversible switching of a NiO(10 min) film in aqueous KOH (0.1 mol dm^{−3}) between the transmissive green “bleached” state and the colored (deep brown) state. Electrochromic switching was conducted by application of potential steps (0.00 V → +0.50 V → −0.20 V) vs silver wire. The arrows indicate the direction of change in absorbance. The NiO(10 min) film had first been conditioned by 500 cycles (−0.50 → +0.70 → −0.50 V vs SCE) at 50 mV s^{−1}.

shows the visible in situ transmittance spectra of the as-deposited NiO(10 min) film following the 1000th and 10000th cycles. At 550 nm, the transmittance of the “bleached” state was 93.5 and 88.7% respectively, after the 1000th and 10000th cycles. The transmittance of the “colored” state was 49.3 and 47.6%, respectively, after the 1000th and 10000th cycles. The change in transmittance between the 1000th (Δ%T = 44.2%) and 10000th (Δ%T = 41.1%) cycle was minimal, indicating good adherence of the film and consistent color-switching properties. This shows that the NiO film deposited by AACVD is stable and suitable for electrochromic window applications. By way of comparison, in our laboratory, we have prepared NiO films by electrodeposition and on electrochromic

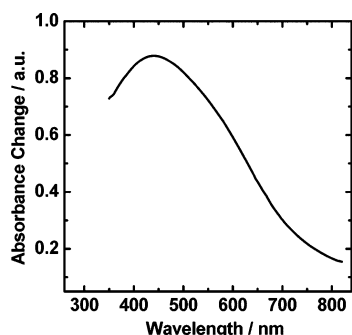


Figure 11. Change in absorbance of NiO(20 min) film recorded at cycle 500 in the wavelength range of 350–820 nm.

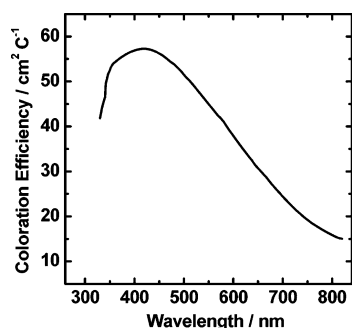


Figure 12. Coloration efficiency of NiO(15 min) film recorded at cycle 100 in the wavelength range of 330–820 nm.

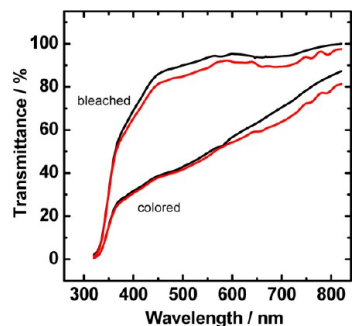


Figure 13. Visible region in situ transmission spectra for a NiO(10 min) film following the 1000th (black) and 10000th (red) CV in the "bleached" and colored states recorded in the wavelength range of 320–820 nm in aqueous KOH (0.1 mol dm⁻³). The film had been cycled for 1000 and 10000 cycles (-0.50 → +0.70 → -0.50 V vs SCE) at 50 mV s⁻¹.

switching we found the change in transmittance, $\Delta\%T$, to decrease from 84.8 to 56.0%, after just 50 electrochromic cycles.

Color Measurement of the NiO-Based Thin Films.

Table 2 gives CIE 1931% Y_Lxy and CIELAB $L^*a^*b^*$ chromaticity coordinates for the various films as calculated from visible region absorbance spectra (such as Figure 10a, b).

Figure 14a shows the dynamic changes of the CIE 1931 xy coordinates as a hue and saturation track, on potential stepping between the "bleached" and colored states, as a function of the deposition time of the original NiO films.

At the initial applied potential (0.00 V), the "bleached" films appear by eye as transmissive light green. With an increase in film thickness, the x , y , and % Y_L coordinates (Table 2) depart from those of the illumination source (the "white point", where

Table 2. Chromaticity Coordinates (CIE 1931% Y_Lxy and CIELAB $L^*a^*b^*$) for each of the NiO/NiOOH Films on FTO/Glass^a

original film source	x	y	% Y_L	L^*	a^*	b^*
NiO(10 min) "bleached"	0.347	0.362	86.7	95	0	8
NiO(10 min) colored	0.392	0.377	32.3	64	10	17
NiO(15 min) "bleached"	0.361	0.376	77.1	90	1	16
NiO(15 min) colored	0.420	0.391	21.3	53	12	23
NiO(20 min) "bleached"	0.374	0.386	69.5	87	2	21
NiO(20 min) colored	0.447	0.397	13.9	44	15	25

^aFilms were switched in aqueous KOH (0.1 mol dm⁻³) between the "bleached" and colored states by application of potential steps (0.00 V → +0.50 V for 10 s and +0.50 V → -0.20 V for 10 s) vs silver wire.

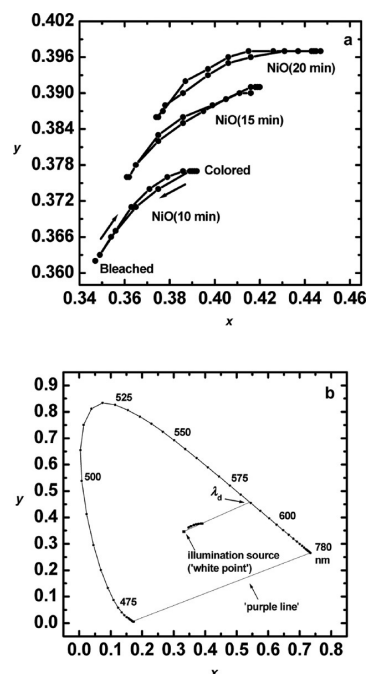


Figure 14. (a) CIE 1931 xy chromaticity plots for each of the NiO/NiOOH films on FTO/glass. Films were switched in aqueous KOH (0.1 mol dm⁻³) between the "bleached" and colored states by application of potential steps (0.00 V → +0.50 V for 10 s and +0.50 V → -0.20 V for 10 s) vs silver wire. The arrows indicate the direction of the changes with the potential. (b) CIE 1931 xy coordinates for the NiO/NiOOH film on FTO/glass prepared from the as-deposited NiO(10 min). This Figure shows the locus coordinates, with labeled hue wavelengths, and the evaluation of the dominant wavelength ($\lambda_d = 584$ nm)) of the deep brown state.

$x = 0.332$, $y = 0.347$, and % $Y_L = 100$), as the light green color becomes slightly more intense. On stepping the applied potential to +0.50 V, films steadily turn to deep brown, with an increase in the x and y coordinates, and decrease in the luminance (% Y_L) (Table 2 and Figure 14a). In Figure 14b, the xy data for films prepared from as-deposited NiO(10 min) are overlaid onto the CIE 1931 color space template, showing the track of the xy coordinates between the "bleached" and colored states. In this representation, the line surrounding the horseshoe shaped area is called the spectral locus, giving the visible-light wavelength. The most saturated colors lie along the spectral locus. The line connecting the longest and shortest wavelength contains the nonspectral purples and is known as the purple line. Surrounded by the spectral locus and the purple

line is the region known as the color locus, which contains every color that can exist. The location of any point in the xy diagram gives the hue and saturation of the color. The hue may be determined by drawing a straight line from the white point, through the point of interest to the spectral locus, thus obtaining the dominant wavelength (λ_d). The construction in Figure 14b gives an estimated value of 584 nm for colored (deep brown) state of the film prepared from as-deposited NiO(10 min). There is a small increase in λ_d values with increase in deposition time, with values being 585 and 587 nm for films prepared from NiO(15 min) and NiO(20 min), respectively.

In CIE theory, colors cannot be specifically associated with a given pair of xy coordinates, because the third dimension of color, lightness, is not included in the diagram. The relative lightness or darkness of a color is very important in how it is perceived, and is presented as the relative or percentage luminance, Y_L , of the sample, to that of the background, Y_o . Relative luminance values can range from 100% for white/translucent samples (no light absorbed) to zero for samples that absorb all the light. Figure 15 shows the graphical form of

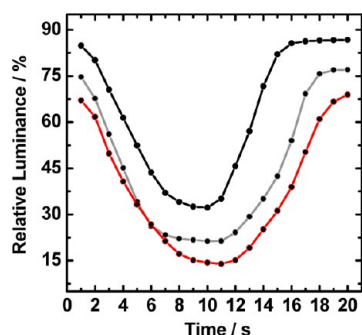


Figure 15. CIE 1931 relative luminance data vs time for each of the NiO/NiOOH films on FTO/glass. The films were prepared from the original as-deposited NiO films as indicated: NiO(10 min) (black), NiO(15 min) (gray), and NiO(20 min) (red). Films were switched in aqueous KOH (0.1 mol dm^{-3}) between the “bleached” and colored states by application of potential steps ($0.00 \text{ V} \rightarrow +0.50 \text{ V}$ for 10 s and $+0.50 \text{ V} \rightarrow -0.20 \text{ V}$ for 10 s) vs silver wire.

the changes in the $\%Y_L$ on potential switching between the “bleached” and colored state for all the NiO-based films. When the films are oxidized, the luminance dramatically decreases, as the deep brown color forms and steadily becomes more saturated.

The CIELAB $L^*a^*b^*$ coordinates (Table 2) are a uniform color space defined by CIE in 1976 and offer a standard commonly used in the paint, plastic and textile industries. L^* is the lightness variable of the sample, while a^* and b^* correspond to the two antagonistic chromatic processes (red-green and yellow-blue). In a $L^*a^*b^*$ chromatic diagram, $+a^*$ is the red direction, $-a^*$ is the green direction, $+b^*$ is the yellow direction, and $-b^*$ is the blue direction. The center (0, 0) of the chromaticity diagram is achromatic. As the a^* and b^* values increase, the saturation of the color increases. At the initial 0.00 V applied potential, the “bleached” state ($L^* = 95$, $a^* = 0$, $b^* = 8$) prepared from as-deposited NiO(10 min) is close to the achromatic “white point” ($L^* = 100$, $a^* = 0$, $b^* = 0$). For thicker films, there is a small decrease in the initial L^* value, and an increase in a^* and b^* (Table 2). As the potential is stepped to +0.50 V, L^* decreases and the saturation of the

brown color increases, both a^* and b^* values becoming more positive (Table 2). With increase in film thickness, the brown coloration becomes more saturated as quantified by a decrease in L^* when in its colored state and an increase in a^* and b^* (Table 2). Although it might be expected that a combination of positive a^* and b^* values would produce orange, in combination with low L^* values, the films are perceived as deep brown.

CONCLUSIONS

Aerosol-assisted chemical vapor deposition (AACVD) has been used for the first time to prepare thin films of NiO on FTO-coated glass. Following transfer to aqueous KOH (0.1 mol dm^{-3}) and conditioning oxidative voltammetric cycling, the films show good electrochromic properties with reversible switching between transmissive light green and deep brown states. Using a calculation method based on the integration of experimental spectral power distributions derived from in situ visible region spectra over the CIE 1931 color-matching functions, the color stimuli of the NiO-based films, and the changes that take place on reversibly switching between the “bleached” and colored forms have been calculated.

ASSOCIATED CONTENT

Supporting Information

EDS analysis, optical absorption spectra, an additional SEM image, and current–time transients are available. This material is available free of charge via the Internet at <http://pubs.acs.org>.

AUTHOR INFORMATION

Corresponding Author

*E-mail: r.j.mortimer@lboro.ac.uk

Notes

The authors declare no competing financial interest.

ACKNOWLEDGMENTS

We thank the Loughborough University Materials Research School for the provision of a research studentship to MZS. AMT acknowledges the funding received from the Government of Malaysia for his doctoral studies in the Department of Chemistry, Loughborough University, U.K.

REFERENCES

- (1) Monk, P. M. S.; Mortimer, R. J.; Rosseinsky, D. R. *Electrochromism and Electrochromic Devices*; Cambridge University Press: Cambridge, U.K., 2007.
- (2) Mortimer, R. J. *Annu. Rev. Mater. Res.* **2011**, *41*, 241–268.
- (3) Baetens, R.; Jelle, B. P.; Gustavsen, A. *Sol. Energy Mater. Sol. Cells* **2010**, *94*, 87–105.
- (4) Byker, H. J. *Single-compartment, self-erasing, solution-phase electrochromic devices, solution for use therein and uses thereof*. U.S. Patent 4 902 108, 1990.
- (5) Niklasson, G. A.; Granqvist, C. G. *J. Mater. Chem.* **2007**, *17*, 127–156.
- (6) Nagai, J.; McMeeking, G. D.; Saitoh, Y. *Sol. Energy Mater. Sol. Cells* **1999**, *56*, 309–319.
- (7) Zelazowska, E.; Rysiakiewicz-Pasek, E. *J. Non-Cryst. Solids* **2008**, *354*, 4500–4505.
- (8) Xu, Y. Z.; Qiu, M. Q.; Qiu, S. C.; Dai, J.; Cao, G. J.; He, H. H.; Wang, J. Y. *Sol. Energy Mater. Sol. Cells* **1997**, *45*, 105–113.
- (9) Yueyan, S.; Zhiyang, Z.; Xiaoji, Y. *Sol. Energy Mater. Sol. Cells* **2002**, *71*, 51–59.
- (10) Conell, R. S.; Corrigan, D. A.; Powell, B. R. *Sol. Energy Mater. Sol. Cells* **1992**, *25*, 301–313.

- (11) Agrawal, A.; Habibi, H. R.; Agrawal, R. K.; Cronin, J. P.; Roberts, D. M.; Caron-Papowich, R.; Lampert, C. M. *Thin Solid Films* **1992**, *221*, 239–253.
- (12) Scarminio, J.; Urbano, B.; Gardes, J.; Gorenstein, A. J. *Mater. Sci. Lett.* **1992**, *11*, 562–563.
- (13) Carpenter, M. K.; Conell, R. S.; Corrigan, D. A. *Sol. Energy Mater.* **1987**, *16*, 333–346.
- (14) Yuan, Y. F.; Xia, X. H.; Wu, J. B.; Chen, Y. B.; Yang, J. L.; Guo, S. Y. *Electrochim. Acta* **2011**, *56*, 1208–1212.
- (15) Sharma, P. K.; Fantini, M. C. A.; Gorenstein, A. *Solid State Ionics* **1998**, *113–115*, 457–463.
- (16) Dalavi, D. S.; Devan, R. S.; Patil, R. S.; Ma, Y.-R.; Patil, P. S. *Mater. Lett.* **2013**, *90*, 60–63.
- (17) Dalavi, D. S.; Suryavanshi, M. J.; Patil, D. S.; Mali, S. S.; Moholkar, A. V.; Kalagi, S. S.; Vanalkar, S. A.; Kang, S. R.; Kim, J. H.; Patil, P. S. *Appl. Surf. Sci.* **2011**, *257*, 2647–2656.
- (18) Zhang, E.; Tang, Y.; Zhang, Y.; Guo, C.; Yang, L. *Mater. Res. Bull.* **2009**, *44*, 1765–1770.
- (19) Dalavi, D. S.; Devan, R. S.; Patil, R. S.; Ma, Y.-R.; Kang, M.-G.; Kim, J.-H.; Patil, P. S. *J. Mater. Chem. A* **2013**, *1*, 1035–1039.
- (20) Patil, R. A.; Devan, R. S.; Lin, J.-H.; Ma, Y.-R.; Patil, P. S.; Liou, Y. *Sol. Energy Mater. Sol. Cells* **2013**, *112*, 91–96.
- (21) Maruyama, T.; Arai, S. *Sol. Energy Mater. Sol. Cells* **1993**, *30*, 257–262.
- (22) Hou, X.; Choy, K. L. *Chem. Vap. Deposition* **2006**, *12*, 583–596.
- (23) Choy, K. L. *Prog. Mater. Sci.* **2003**, *48*, 57–170.
- (24) Tahir, A. A.; Ehsan, M. A.; Mazhar, M.; Wijayantha, K. G. U.; Zeller, M.; Hunter, A. D. *Chem. Mater.* **2010**, *22*, 5084–5092.
- (25) Dharmadasa, R.; Tahir, A. A.; Wijayantha, K. G. U. *J. Am. Ceram. Soc.* **2011**, *94*, 3540–3546.
- (26) Tahir, A. A.; Wijayantha, K. G. U. *J. Photochem. Photobiol., A* **2010**, *216*, 119–125.
- (27) Bloor, L. G.; Manzi, J.; Binions, R.; Parkin, I. P.; Pugh, D.; Afonja, A.; Blackman, C. S.; Sathasivam, S.; Carmalt, C. J. *Chem. Mater.* **2012**, *24*, 2864–2871.
- (28) Wyszecki, G.; Stiles, W. S. *Color Science: Concepts and Methods, Quantitative Data and Formulae*, 2nd ed.; John Wiley and Sons: New York, 1982.
- (29) Mortimer, R. J.; Varley, T. S. *Displays* **2011**, *32*, 35–44.
- (30) *CIE Technical Report: Colorimetry*, 3rd ed.; Commission Internationale De l'Éclairage: Vienna, Austria, 2004.
- (31) Kawar, R. K.; Chigare, P. S.; Patil, P. S. *Appl. Surf. Sci.* **2003**, *206*, 90–101.
- (32) Patil, P. S.; Kadan, L. D. *Appl. Surf. Sci.* **2002**, *199*, 211–221.
- (33) Garcia-Miquel, J. L.; Zhang, Q.; Allen, S. J.; Rougier, A.; Blyr, A.; Davies, H. O.; Jones, A. C.; Leedham, T. J.; Williams, P. A.; Impey, S. A. *Thin Solid Films* **2003**, *424*, 165–170.
- (34) Bouessay, I.; Rougier, A.; Beaudoin, B.; Leriche, J. B. *Appl. Surf. Sci.* **2002**, *186*, 490–495.
- (35) Bouessay, I.; Rougier, A.; Tarascon, J.-M. *J. Electrochem. Soc.* **2004**, *151*, H145–H152.
- (36) Bouessay, I.; Rougier, A.; Poizot, P.; Moscovici, J.; Michalowicz, A.; Tarascon, J.-M. *Electrochim. Acta* **2005**, *50*, 3737–3745.
- (37) Huang, H.; Tian, J.; Zhang, W. K.; Gan, Y. P.; Tao, X. Y.; Xia, X. H.; Tu, J. P. *Electrochim. Acta* **2011**, *56*, 4281–4286.
- (38) Lampert, C. M.; Omstead, T. R.; Yu, P. C. *Sol. Energy Mater.* **1986**, *14*, 161–174.
- (39) Xia, X. H.; Tu, J. P.; Zhang, J.; Wang, X. L.; Zhang, W. K.; Huang, H. *Sol. Energy Mater. Sol. Cells* **2008**, *92*, 628–633.
- (40) Arakaki, J.; Reyes, R.; Horn, M.; Estrada, W. *Sol. Energy Mater. Sol. Cells* **1995**, *37*, 33–41.
- (41) Velevska, J.; Ristova, M. *Sol. Energy Mater. Sol. Cells* **2002**, *73*, 131–139.

paper, and Figure 1 was revised. The corrected version was reposted on June 12, 2013.

NOTE ADDED AFTER ASAP PUBLICATION

This paper was published on the Web on June 10, 2013. Additional text corrections were implemented throughout the